



Barleycroft, Church Street, Rudgwick, RH12 3ED

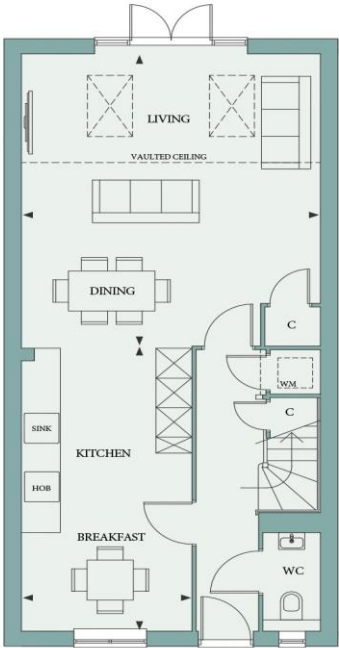
Barleycroft 3 beds over 1100 sq ft

£469,950

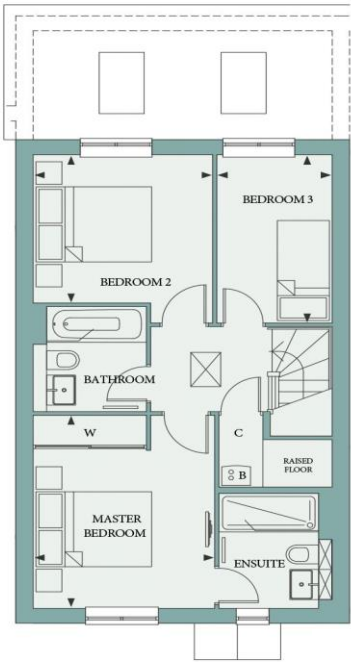


Over 1100 sq ft * Spacious open plan living/dining room * Kitchen/breakfast room * Master Bedrooms with En-Suite * 2 Further Bedrooms * Parking for 2 vehicles * 10 year NHBC Buildmark Scheme * Government Help to Buy scheme (T & C apply) * EPC Rating:tba

"Barleycroft" an exclusive collection of just 55 beautiful 2,3,4 & 5 bedroom homes in the historic village of Rudgwick on the Sussex-Surrey border built by Berkeley. Inside each inviting family home you will find light filled rooms finished to the highest standards and with stunning specification. At Barleycroft each home combines traditional skills, innovative design and contemporary features. Plot 45, 'The Burnetrose', is a lovely mid terraced home with parking for two vehicles. Accommodation including open plan living/dining room, kitchen/breakfast room and master bedroom featuring an en-suite shower room. Please note the interior photos are from the show home-Plot 47. Our Sales Suites is open by appointment only. We are able to facilitate phone calls,video calls and where possible, virtual tours of our homes. CALL ROGER N COUPE NOW ON 01483 268555 FOR FURTHER DETAILS AND TO ARRANGE A VIEWING



Ground Floor	
KITCHEN/BREAKFAST	18' 7" x 9' 7"
LIVING/DINING	19' 0" x 16' 10"



First Floor	
MASTER BEDROOM	12' 6" x 10' 2"
BEDROOM 2	10' 1" x 9' 7"
BEDROOM 3	10' 11" x 6' 5"